



## Logistics Cluster Information Management Products

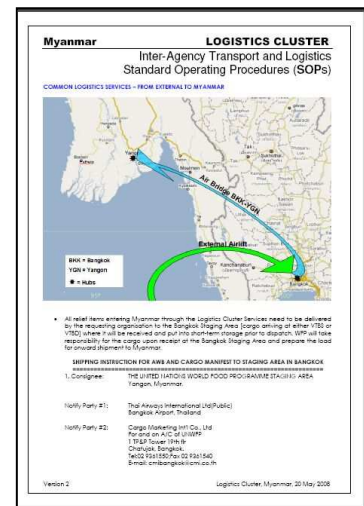
- Planning assumptions and risk factors, if applicable
- Upstream pipeline and transport
- Corridors and entry points, including cargo consolidation or transshipment points, if required
- Downstream pipeline
- Coordination mechanisms
- Transport and warehousing assets available and tasking mechanisms
- Cargo movement request procedures
- Roles and responsibilities of actors involved

The ConOps provides a brief overview of the structure and processes you will use in the operation. The ConOps should enable new staff and organisations arriving into the theatre of operations to immediately have a clear understanding of what and how you plan to implement the relief operation and it is the basis for your Special Operation\* and logistics input to your Emergency Operation document(s).

\* *Special Operations is a Programme Category for interventions undertaken to:*  
 1. *rehabilitate and enhance transport and logistics infrastructure to permit timely and efficient delivery of food assistance, especially to meet emergency and protracted relief needs;*  
 2. *Enhance coordination within the United Nations System and with other partners through the provision of designated common services.*

### Standard Operating Procedures (SOPs):

Once the ConOps has been endorsed by the cluster members, it is build into more detailed documents such as the Standard Operating Procedures (SOPs). This document attempts to capture on paper the Logistics Cluster plan to 'operationalise' the Logistics Services for the humanitarian assistance that will be put in place under a Special Operation (SO). It is envisaged that the plan will be regularly updated as the operation develops and as it becomes clearer the extent to which the Logistics Cluster is required to provide integrated common transport services to the entire humanitarian community



### Logistics Snapshots – Public – As information available:



The snapshots are one-page handouts designed to provide a quick overview of a logistically important issue or location. Essentially they are a summary or one-page version of the logistics guides. Alternatively they might be a republication of the executive summary of a thematic report.

They should be kept in sync with the relevant website pages, be distributed locally by field staff in printed version and by email, appear on the website and be mentioned in the bulletin.

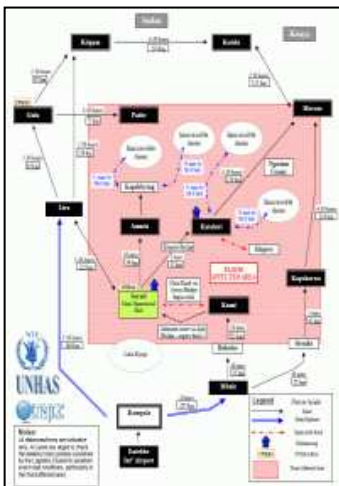
The snapshot should be reviewed and updated as appropriate during the life of a Logistics Cluster operation and clearly have the date prominent. For examples see <http://www.logcluster.org/gaza09a/supply-chain/hubs>



# Logistics Cluster Information Management Products

and must be edited and approved/cleared for release as they often discuss sensitive issues. The bulletins are short and focussed, concentrating on new developments, current problems/recommendations and an analysis of key issues. Details or other thematic are published in separate Logistics Guides that are updated when required.

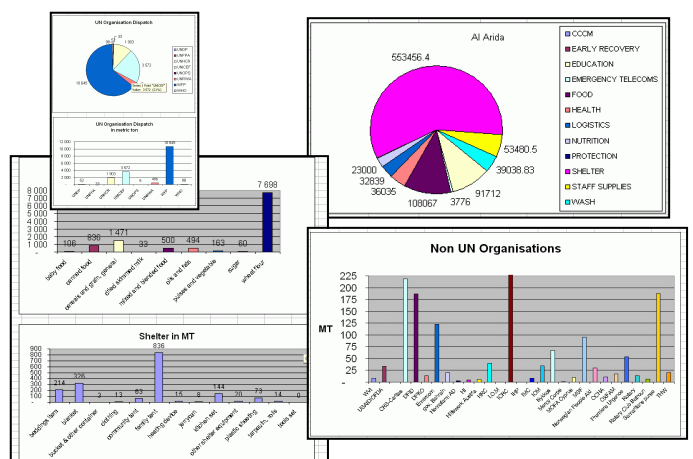
## Transport Schematics:



Provides a summary overview of the status of the key humanitarian access corridors to the flood affected area, as well as additional information regarding the status of individual feeder roads and key infrastructure points within the affected area.

## Joint Supply tracking reports:

- **General overview** of the pipeline flow
- Cargo movement **prioritization**
- Supply **tracking** of the common transport service
- **Ad hoc** reports based on users requests.



## Road condition Matrix:

Key Access Routes into the Teso Region:			
Route	Status	Restrictions	Comment
Mbale – Kumi	Open	None	
Kumi – Soroti (main road via Awoja bridge)	Closed	-	Bridge Closed by minister on 23 <sup>rd</sup> October
Kumi – Soroti (bypass via Agu Bridge)	Open	None	Repairs made, but delays may still occur near the Agu Bridge
Soroti – Katakwi (via Komolo Bridge)	Open	None	
Soroti – Amuria	Open	None	
Soroti – Wera	Open	None	
Soroti – Lira	Open	None	***Recommended route from Kampala to Soroti***
Lira – Gulu	Open	None	
Lira – Pader	Restricted	4wd only	
Lira – Kitgum	Restricted	10mt	
Gulu – Pader (via Awere)	Restricted	-	Difficult to pass near Lukor after rainfall
Gulu – Pader (via Atanga)	Restricted	10mt	

The matrix provides general overview of the affected area incorporating distance/time information on key routes to help facilitate logistical planning by agencies. Information is gathered within the logistics users' community.

## Logistics Cluster Information Management Products

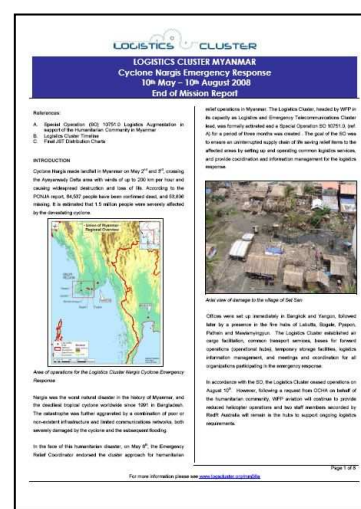
**End of Mission report – released after a Logistics Cluster operation closes:**

At the end of the emergency phase, of each Logistics Cluster operation a report is usually written that summarises the key cluster activities, achievements and summarizes the lesson learned in the operation.

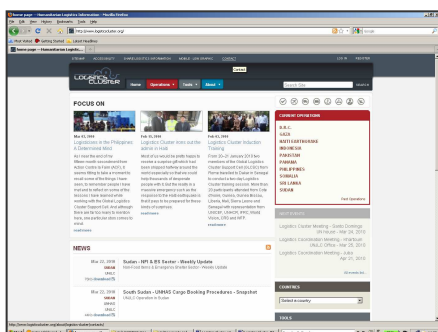
All significant Logistics Cluster missions to date have been reviewed when finalized. These reviews/ End of Mission Report, involve all key stakeholders, including the Logistics Cluster, agencies, national authorities and NGOs.

The final report of these reviews is a public document, available online and distributed to all stakeholders, the UN Country Team and donors and made available to the broader humanitarian community.

Prior reviews are available at <http://www.logcluster.org>



**Website – Public and Internal sections – updated daily:**



The Logistics Cluster website is the primary archive and publication mechanism for all Logistics Cluster information products listed in this document as well as detailed information on logistics facilities and activities reported by Logistics Cluster staff in the field. It is managed by the Global Logistics Cluster Support Cell Information Management pillar and has a number of key features.

- All **logistics information** from every Logistics Cluster operation.
- All **Logistics Cluster publications** and reports.
- **Breaking news** for new information.
- **Crisis specific areas** with logistics information on each crisis.
- **Subscription forms for the Logistics Cluster mailing list.**
- Full text **search** of all documents and pages on the site.
- **Archives of previous UNJLC and Logistics Cluster operations.**
- **Links** to key sources of relevant logistics information.
- Information on upcoming Logistics Cluster **trainings** as well as secure areas for download of training material for participants.
- In some emergencies the site also provides a **helpdesk for logistics questions** which is answered by Logistics Cluster staff.